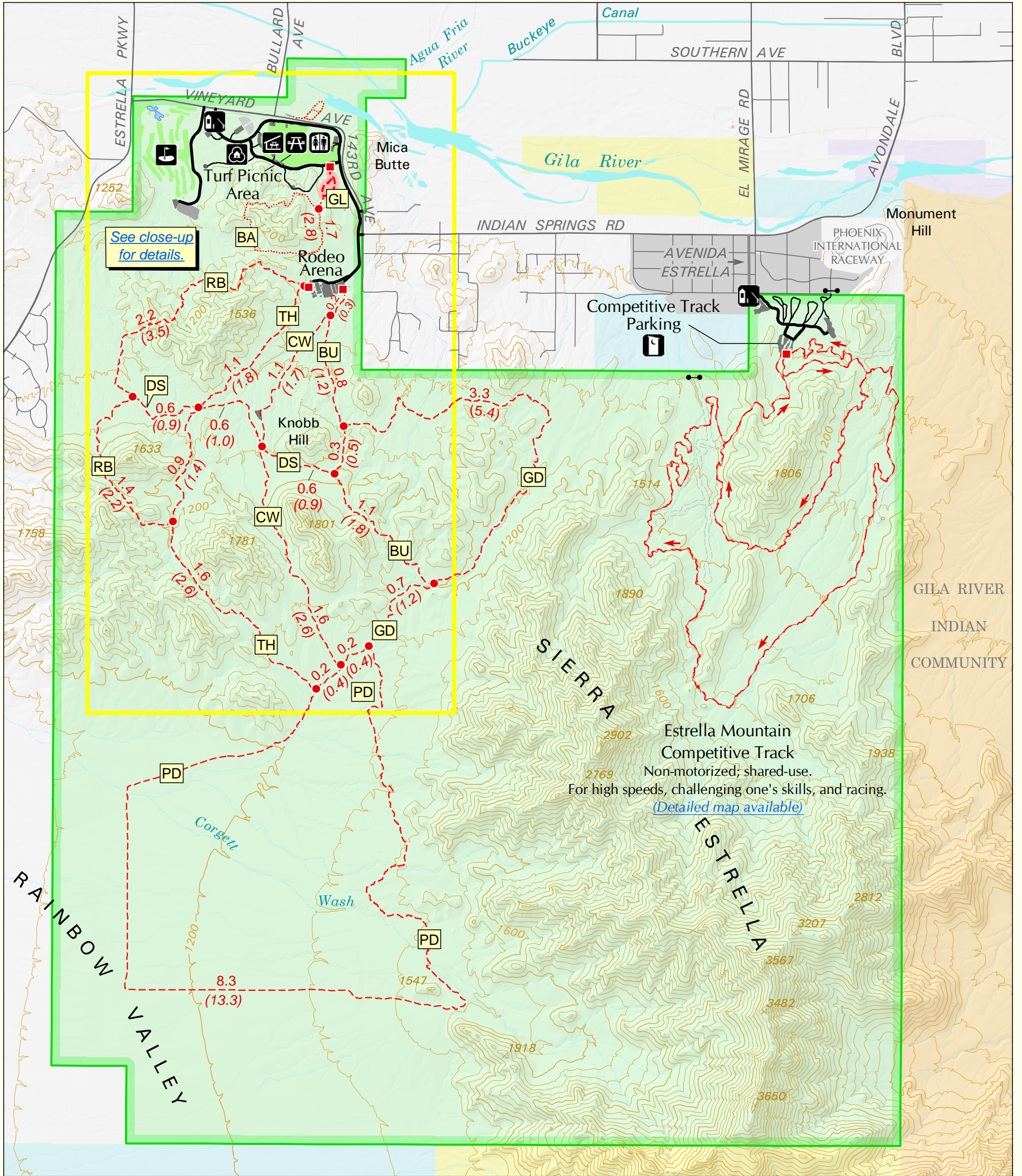


Estrella Mountain Regional Park

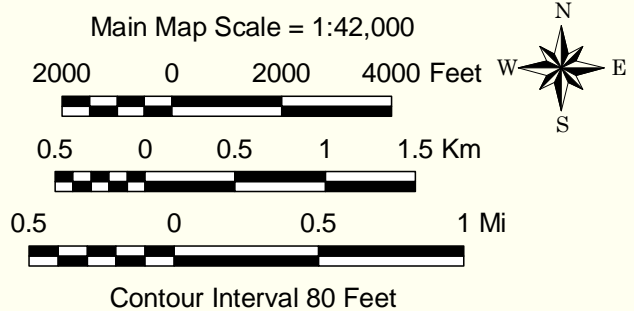


- ### FACILITIES
- Entrance station
 - Nature Center/Park Office
 - Turf Picnic Area (Day use only)
 - Group picnic ramada (Reservable)
 - Restrooms
 - Portable restroom
 - Sierra Estrella Golf Course
- Note: Loop roads near Competitive Track are available for camping by reservation only.

- ### LEGEND
- Shared-use trail
 - Hiker-only trail
 - Barrier-free trail
 - Competitive track
 - Trailhead/Track starting point
 - Locked gate
 - Regional Park boundary
 - Bureau of Land Management
 - AZ Game & Fish Department
 - State trust land
 - Private
- Note: Selected roads shown. Numerous service roads and unofficial trails exist; for your safety, please stay on designated trails.

Trail Code	Trail Name	Length Mi	Length (Km)	Use & Restrictions
BA	Baseline	2.3*	(3.8)*	Hike only
BU	Butterfield	2.2	(3.6)	Shared use
CW	Coldwater	2.9	(4.7)	Shared use
DS	Dysart	1.7	(2.8)	Shared use
GD	Gadsden	4.1	(6.5)	Shared use
GL	Gila	0.5*	(0.7)*	Hike only, barrier-free
PD	Pedersen	8.7**	(14.1)**	Shared use
RB	Rainbow Valley	3.5	(5.7)	Shared use
TH	Toothaker	3.7	(5.9)	Shared use

- Distances shown above are one-way unless indicated by * for round-trip distance (from Gila trailhead) and ** for loop distances; map does not show round-trip or loop distances.
- Distances on map are for segments between trail junctions (•), or junction and trailhead.
- Due to rounding, segment lengths on map may not add up to trail totals shown above.
- Shared Use means all non-motorized access is allowed.



Maricopa County
Parks and Recreation