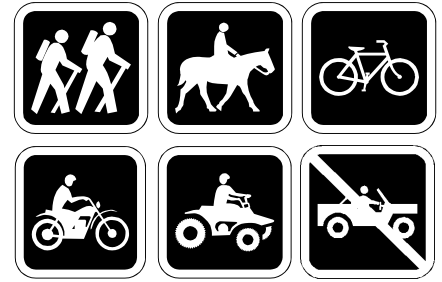




# Prescott National Forest

Bradshaw Ranger District  
928-771-4700



## Watershed Trail — TR 299

**Distance:** 3.1 miles (one way)

### Considerations:

TR 299 is open to hikers, horseback riders, mountain bikes, motorcycles, and ATV's. No automobiles, jeeps, or trucks are allowed. Please refrain from using horses or wheeled vehicles when trail is wet.

The trail tread is generally 50 inches wide with a general slope of over 10% and occasional pitches of 20%. Tread is rocky native soil with scattered obstacles of one foot or more over its length. Cross slope varies from 0% to 10%, inconsistently.

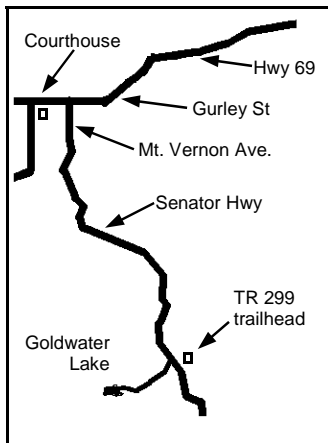
### Trail Highlights:

The trailhead leaves from the Senator Highway at 6,200 feet, climbing 300 feet over 0.6 mile on an open scrub oak covered hillside to Deer Lick Spring. There may be water in a trough for horses.

The trail then climbs 0.6 mile through mixed Ponderosa pine and oak forest to junction with TR 9854 (Seven-Mile Gulch Trail).

From the TR 9854 junction TR 299 turns south for 1.9 miles, rising sharply through Ponderosa forest to Spruce Ridge at 6,900 feet. The trail ends at Forest Road 52A.

### Map:



### Facilities:

No rest rooms at trailheads. Drinking water is not available at site or on trail. Small unimproved parking area at trailhead.

### Directions:

To access the trailhead from downtown Prescott, travel east on Gurley Street 0.3 miles to Mt. Vernon Avenue.

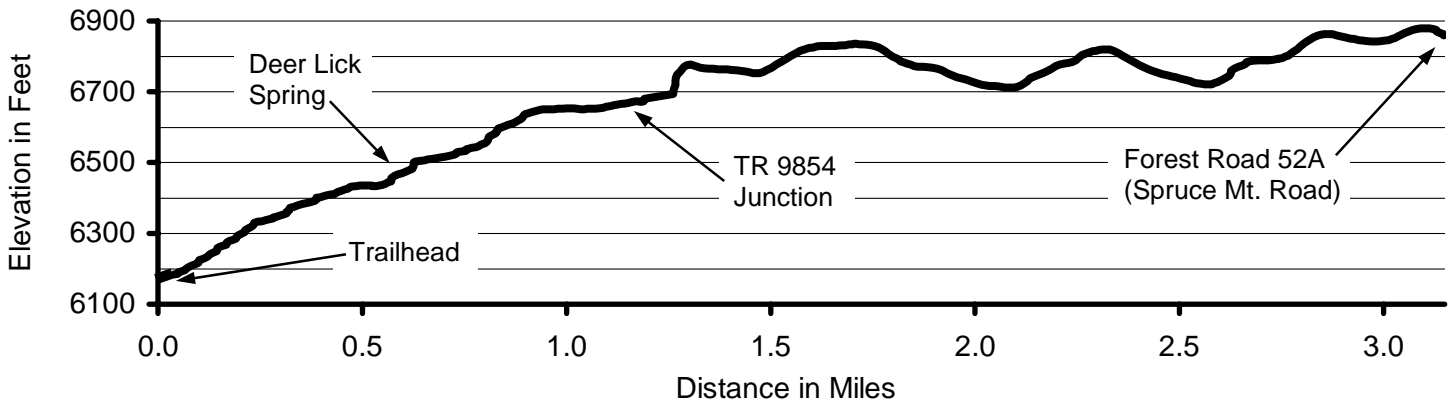
Turn south on Mt. Vernon for 4.1 miles as it becomes the Senator Highway. The TR 299 (Watershed Trail) trailhead is on the east side.

### Trail Profile:

gain = 700 feet

### Topo Map:

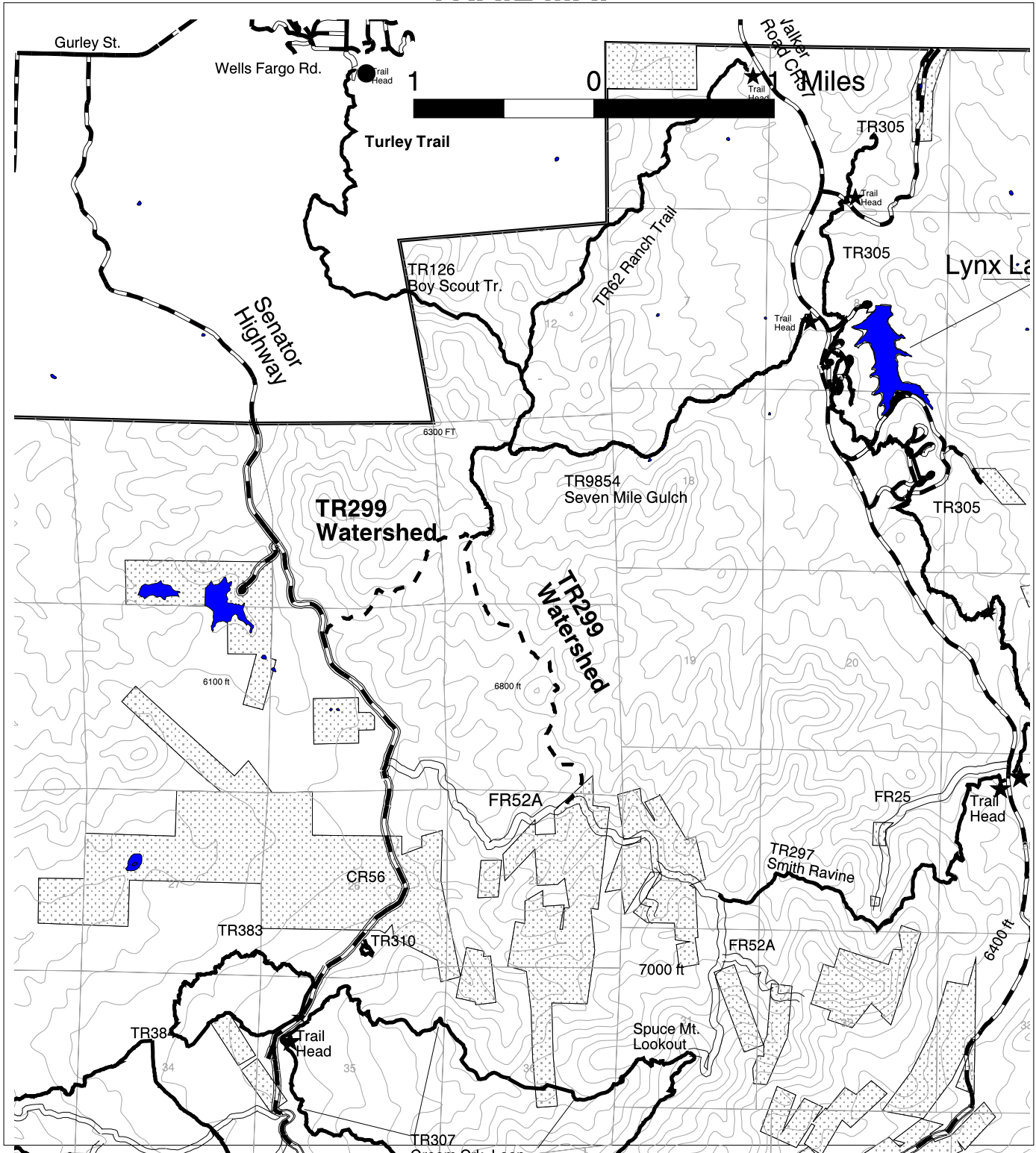
USGS topographic 7.5' quad for Groom Creek.



# TRAIL MAP

RESPECT OTHERS RESPECT WILDLIFE LEAVE WHAT YOU FIND DISPOSE OF WASTE PROPERLY

PLAN AHEAD AND PREPARE TRAVEL & CAMP ON DURABLE SURFACES MINIMIZE CAMPFIRE USE



LEGEND	
	TRAIL TR299
	OTHER TRAIL
	PAVED ROAD
	DIRT ROAD
	NATIONAL FOREST
	PRIVATE PROPERTY
	CONTOUR INTERVAL: 100 ft



Date Created: 06/06/01

Disclaimer: The Forest Service reserves the right to correct, modify, or replace GIS products without notification. This information is not accurate for legal boundary or for navigation purposes; it may not meet National Map Accuracy Standards. The Forest Service assumes no responsibility for the interpretation or application of this data by others.

Prepared by United States Forest Service Southwestern Region Prescott National Forest  
Department of Agriculture

USDA is an equal opportunity provider and employer. To file a complaint of discrimination, write USDA, Director, Office of Civil Rights, Room 326-W, Whitten Building, 14th and Independence Avenue, SW, Washington DC, 20250-9410 or call 202-720-5964 (voice or TTY)